



Director Meeting

Wednesday, February 25, 2015



Believing that every child is a **miracle**
can transform the way we design for
children's care.

Anita Rui Olds

Overview

- **Today we will be presenting:**
 - *Pathways to Quality*, QIS Information for 2015-2016
 - CLASS Training Opportunities
 - The Power of Observations Series
 - Leadership Series for 2015-2016
 - Conference?



Pathways to Quality-QIS

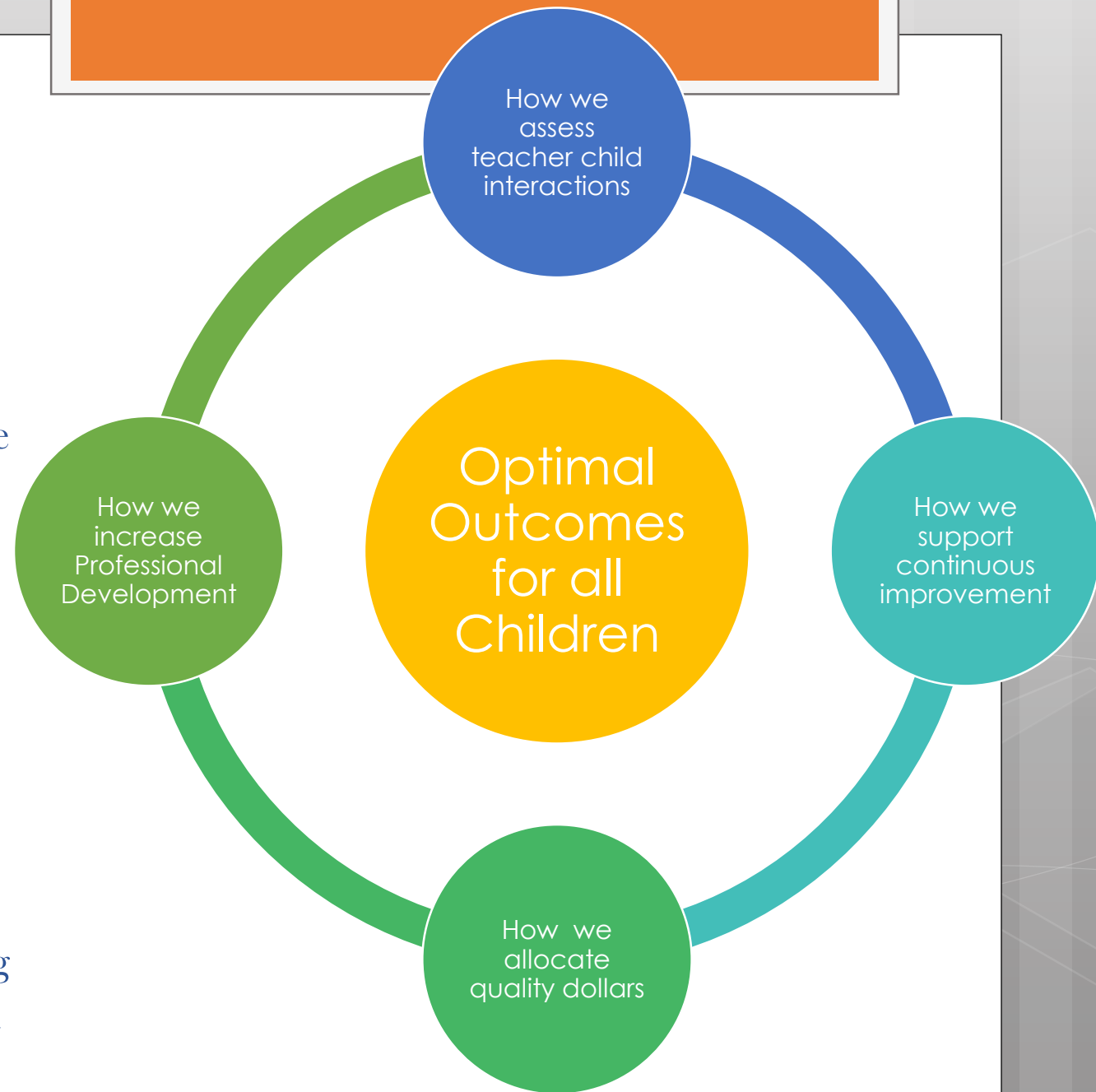
- Pathways to Quality is a Quality Improvement System designed to enhance the quality of programming in early learning programs
- Overall design of the tool
- The future of quality dollars
- What this means for your School Readiness program

Ultimate Goal for Pathways to Quality

How we move forward with a Quality Improvement System will determine the ultimate goal of increasing optimal outcomes for our children.

We must move forward meticulously, paying close attention to what works, what does not and how we continue to improve the system.

Once we add the Child Assessment standard along with other assessment data, we will be able to begin to correlate how the system is improving outcomes for children, which is the fundamental ambition that we are striving for.



Why a QIS?

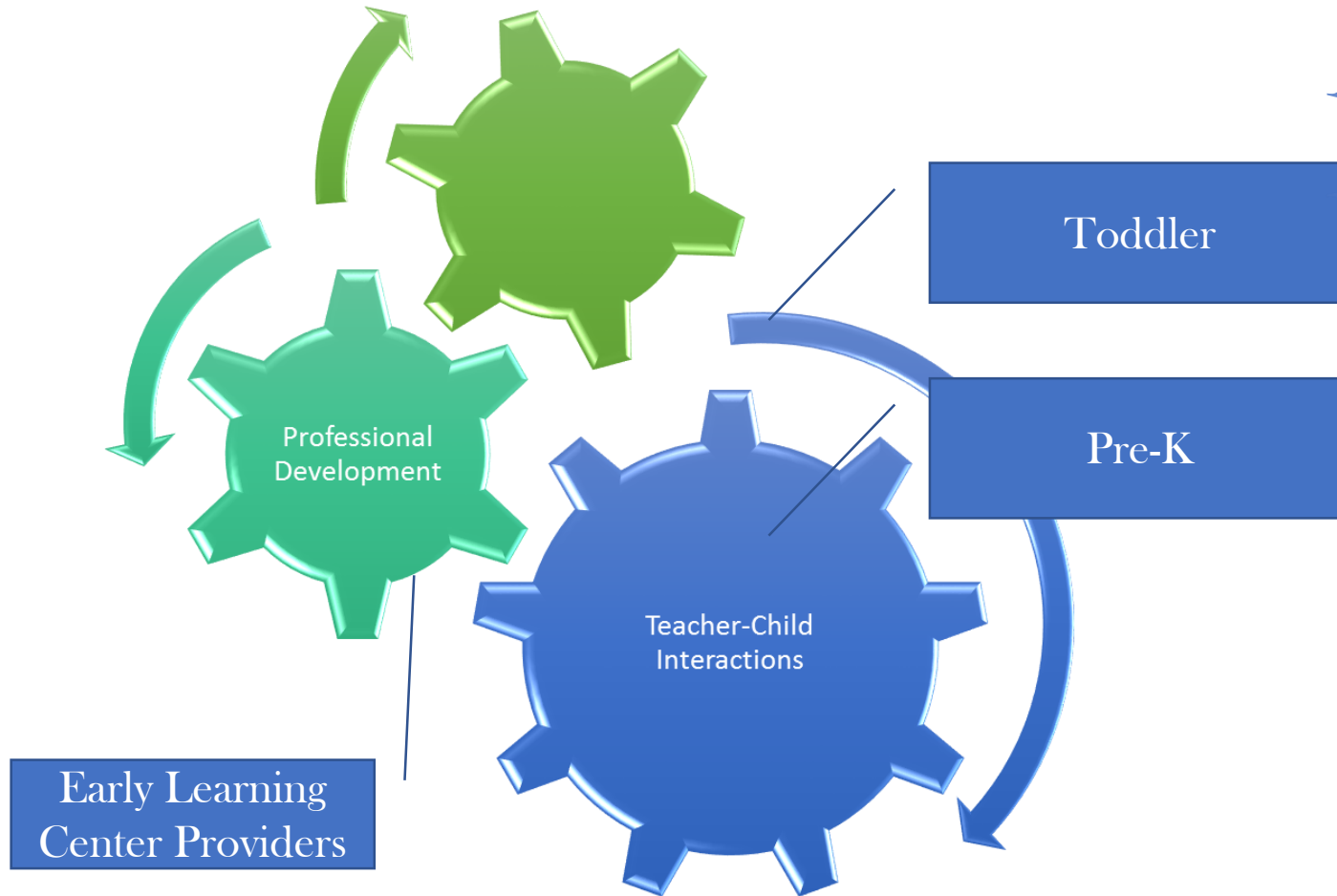
- To Recognize Quality-To Help Define the Term
- To Promote Continuous Improvement
- To help align budgetary determinations to grant opportunities and how to use those dollars consciously towards quality improvements
- To maintain accountability of quality dollar expenditures through data provided by a QIS
- In the future, Pathways to Quality could help guide parents when choosing quality early learning programs and be used to inform stakeholders and community partners



Phase One

- Phase One began in late fall 2014 with a group of six early learning providers
- From there we have worked on the mechanics of the tool for the first two standards:
 - **Professional Development**
 - **Teacher-Child Interactions** (CLASS tool)

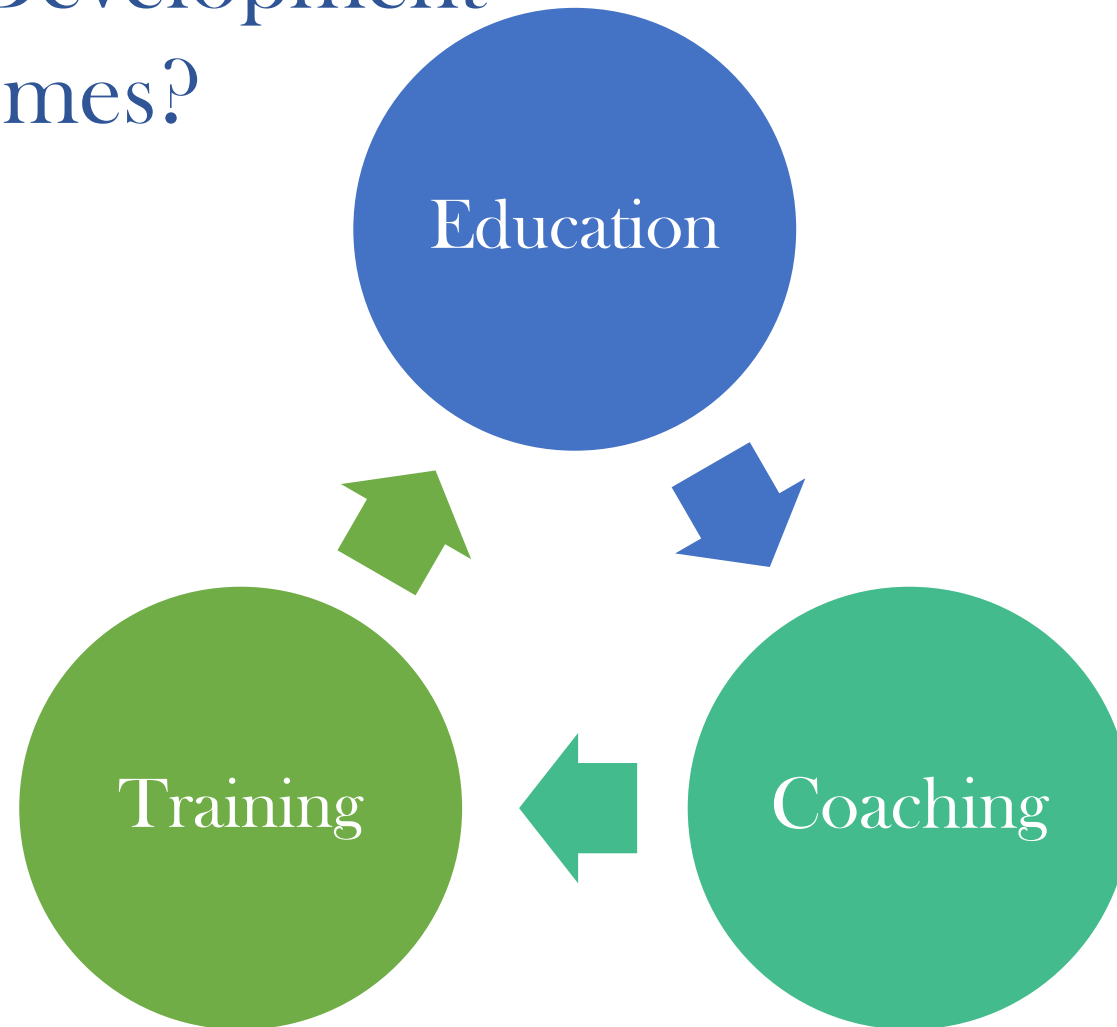
Phase One



ELC Gateway Building Pathways to Quality
Through Interactions Because They Matter...



What Leads to Optimal Professional Development Outcomes?



Phase Two

Pending TSG for VPK -3 year olds

Child Assessments

Infant

Toddler

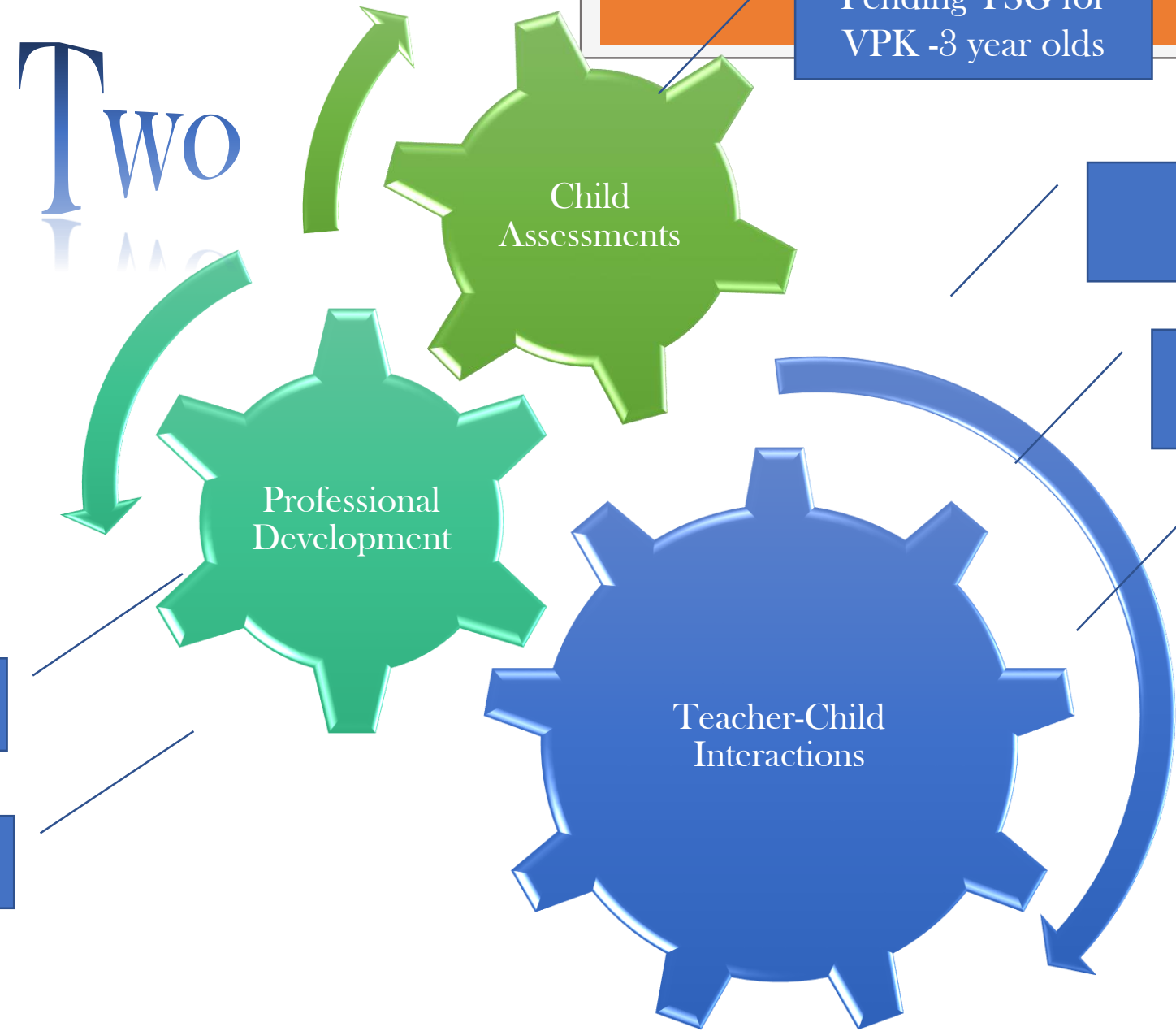
Pre-K

Professional Development

Early Learning Center Providers

Family Child Care Providers (Pilot)

Teacher-Child Interactions



Phase Two

- Phase Two of the system is expected to roll out July 1st 2015
- We will be looking to recruit early learning programs into the system
- Participants that take part in the QIS agree to the terms and conditions of the system requirements
- If you are interested in participating for the 2015-2016 year, please contact pjones@elcgateway.org
- We will be holding a meeting for new providers
- We will also have an **mandatory** orientation in the summer

QIS Enrollment Period

- There will be an annual enrollment period for providers to join *Pathways to Quality*, QIS
- **Early May 2015** will be the enrollment period for **2015-2016**.
- A **mandatory** orientation will be held **late May**
- **June-July 2015** a Provider Support Specialist will be coming to your program for the validation visit

Director Incentives

- Quality programming starts with quality leadership
- Participating Directors would be eligible to apply for opportunities that may include:
 - Bonus Incentive
 - Director related professional development training
 - Educational scholarships in either Early Childhood Education or Business Management with at least 9 college credit hours in ECE



Practitioner Incentives

- Practitioners from a participating program would be eligible to apply for opportunities that may include:
 - Bonus Incentive
 - Attendance to State Conferences
 - Educational Scholarship Opportunities
 - Professional Development Opportunities

Tiered Incentive Bonuses

Level 3

Director

Degreed Staff

Credentialed Staff

Level 4

Director

Degreed Staff

Credentialed Staff

Level 5

Director

Degreed Staff

Credentialed Staff

Incentive Bonus Pay Outs

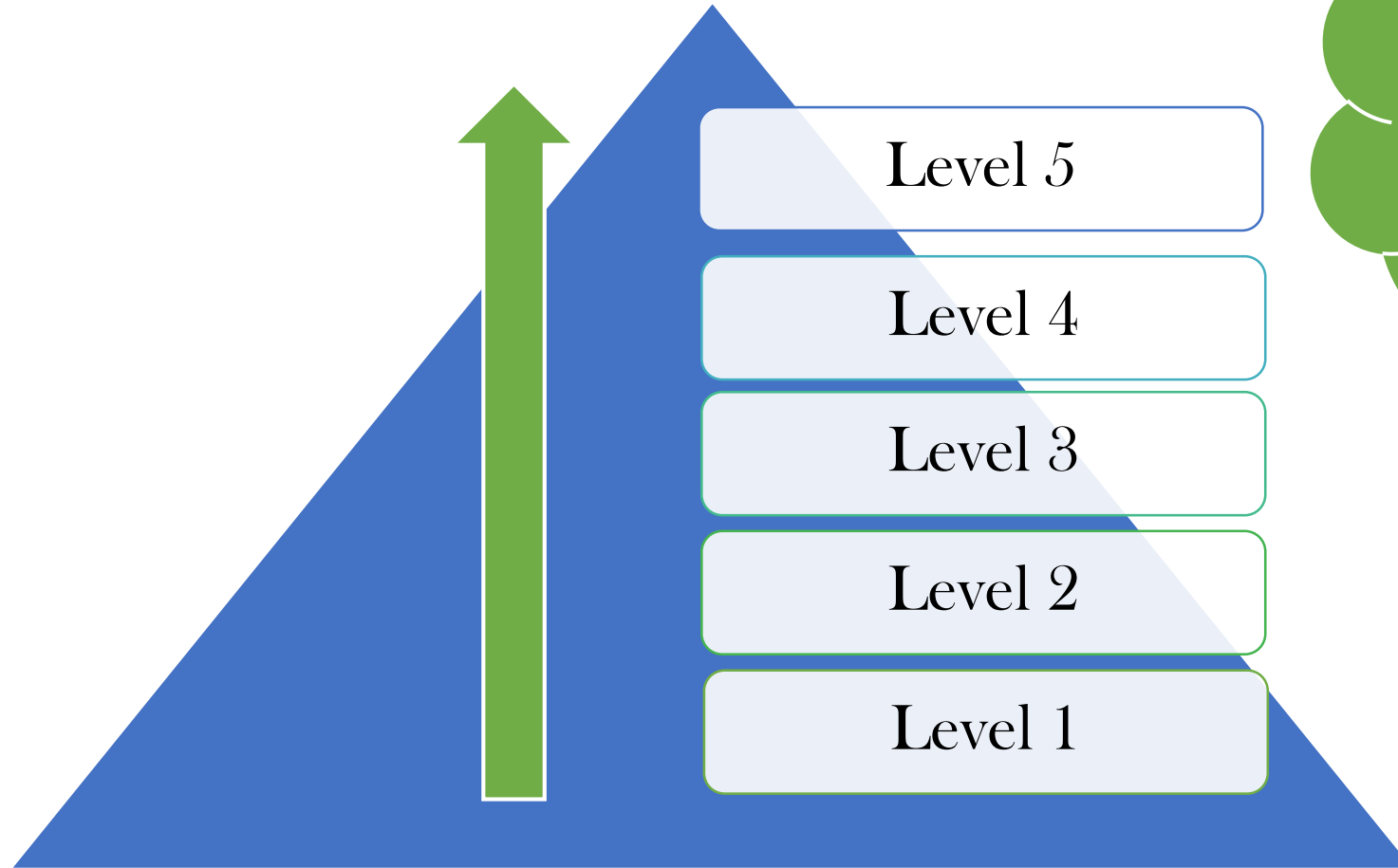
- Bonus pay outs will be bi-annually (December and May)
- A practitioner must be employed at a QIS participating program at each pay out. The practitioner must provide:
 - Most current pay stub
 - Current credential or transcript of degree
 - Picture ID
 - A letter of *good standing* from the director of the program



Educational Scholarships for Practitioners

- The future of educational scholarships should be dependent on the level of quality a program is providing
- In order to be eligible for educational scholarships, a practitioner must be employed with a program that participates in the Pathways to Quality QIS
- The information pulled from the QIS will then help us to design and develop individual career coaching plans according to the needs of the practitioner

Educational Scholarships



Educational Scholarships Begin at Level 1 to Support Programs in Their Endeavor to Improve Quality through Professional Development

State Conferences

- Directors and Practitioners with a participating program would be eligible for one annual state conference such as:
 - One Goal in Tampa, Florida
 - FLAEYC in Orlando, Florida
- ELCFG would provide registration, hotel accommodations, travel, and meals
- Practitioners must complete an implementation assignment to be eligible for subsequent years

PD Training

- Participating programs would be eligible for Pathways to Quality specific professional development training which could include state or regional level training



Levels of Quality



CLASS Training~2015-2016

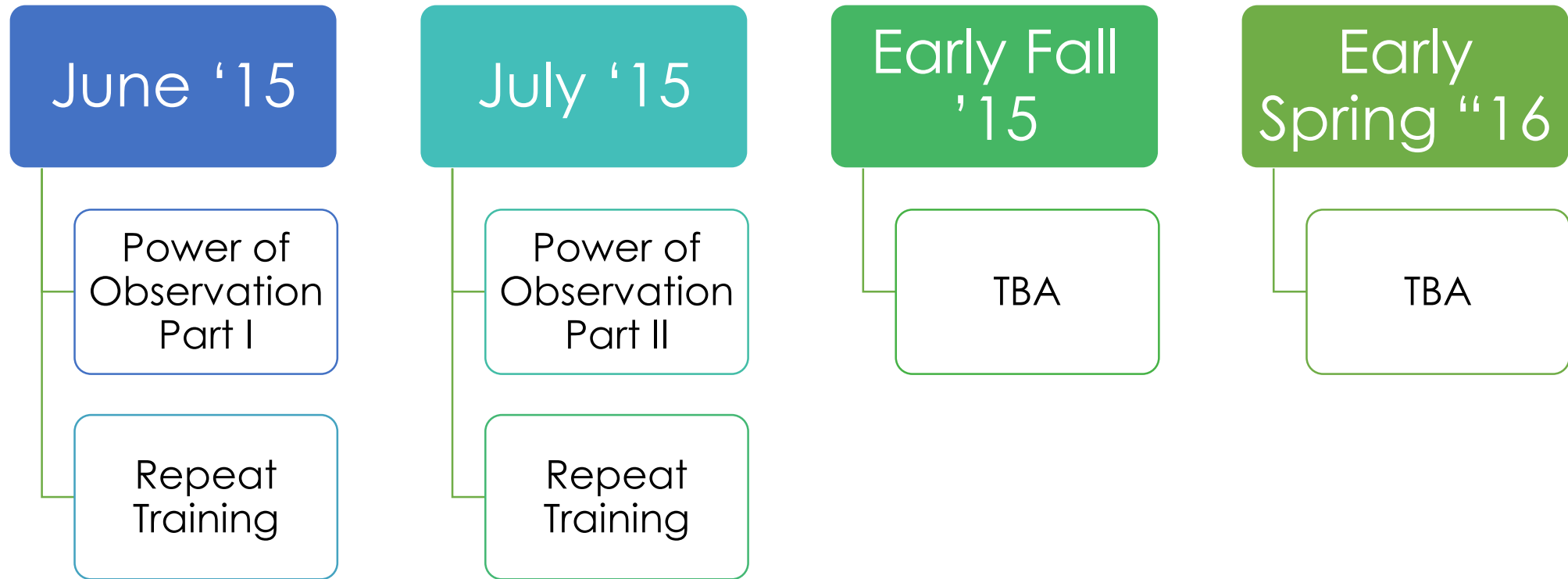
- *Making the Most of Classroom Interactions (MMCI) Training*
 - 20 hours course, 10 sessions
 - Offered to those who have been observed or will be observed in 2015-16
- Dimensions Training Concentration Designed Around
 - Cognitive Development
 - Quality of Feedback/Language Modeling
 - Behavior Management
 - Open to all practitioners



The Power of Observations Series

- This will be a very informative series for practitioners regarding observational assessments and use of portfolios.
- Pending TSG for VPK and possibly the QIS, the Power of Observation training will be a much added benefit as we try and support practitioners through this new practice of observational child assessments.
- We highly encourage your staff to attend this informative training series.

Power of Observation Schedule





Leadership Series

- Director Mixers
 - Kicks off in August
- Conference Calls
- Quarterly Webinars

Conference calls and webinars will be remote informational opportunities for director to participant. We hope that this helps to inform you of business and best practices for your program on a more convenient platform

What About the Provider Conference?

- We are currently working with FGC for a collaborative effort to provide an early childhood conference
- We hope that we will have something scheduled early summer
- Stay tuned! 😊

Thanks for joining us!

- Please remember to contact Priscilla Jones at pjones@elcgateway.org if you are interested in QIS participation or reach out to your *Provider Support Specialist*.
- Find us on Facebook. We are posting informational resources weekly.